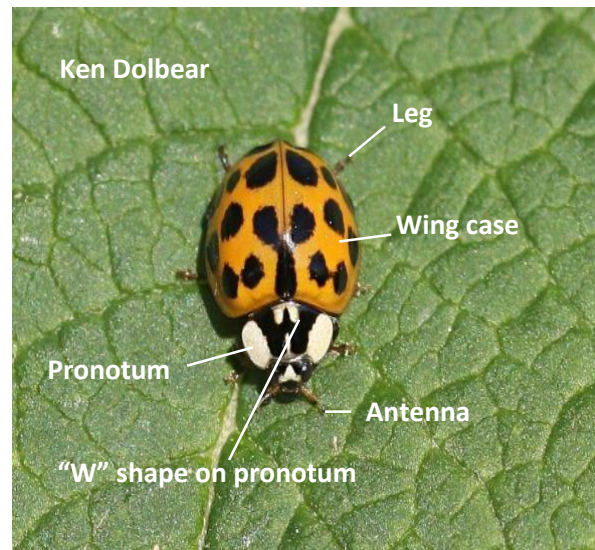


# All Ireland Ladybird Survey 2016-2019 guide to common variations of the Harlequin ladybird (*Harmonia axyridis*)

## Description - adult

- The Harlequin is a large ladybird 7-8mm (1/4 inch).
- It is called Harlequin because the wing cases (elytra) can have many colours - pale yellow-orange, orange-red or even black.
- The number of spots varies from 0-21. The spots can be orange-red or black, sometimes forming a grid pattern.
- A plate like structure behind the head and known as the 'pronotum' often has a distinct "W" pattern on the orange-red Harlequins.
- The leg colour is brown.



## Distinguishing the Harlequin ladybird from native ladybird species

If it is less than 5mm (1/5 inch) in length it is definitely not a Harlequin ladybird.

### Adult (common forms denoted by 'f')



*H.axyridis f.conspicua*



*H.axyridis f.spectabilis*

All Ireland Ladybird Survey 2016-2019 guide to common variations of the Harlequin ladybird (*Harmonia axyridis*)



*H. axyridis f. succinea*



*H. axyridis f. succinea*



*H. axyridis f. succinea*



*H. axyridis f. succinea*

**Larvae and pupae**

These are the young stages – the larvae are often spiky or hairy in appearance.

